

# Successful Intervention with Pedal Approach in A Case with Chronic Total Occlusion of Left Lower Limb Artery

China Medical University Hospital, Taiwan  
Chung-Ho Hsu



# History

- 77 y/o woman
- DM, 1-V CAD, LAD, dyslipidemia, ESRD on HD, PAOD s/p right AK amputation
- Poorly healed left foot wound for 7 month on HBO therapy
- L ABI 0
- Deferred surgical treatment referred from CVS



# Ultrasound

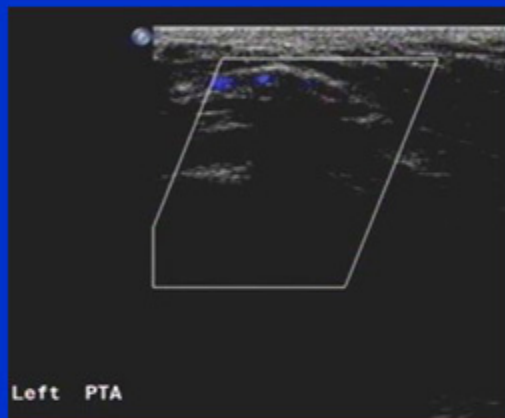


**LSFA: 0 cm/s**

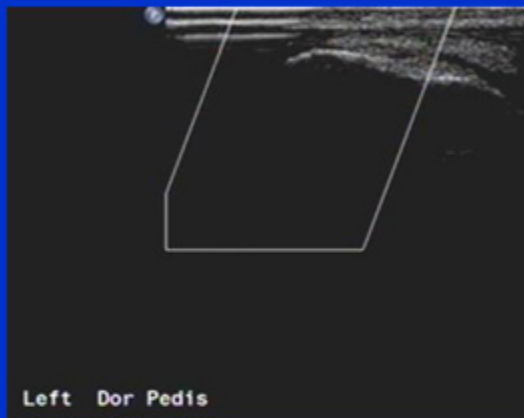


**LPOP: 10 cm/s**

# Ultrasound



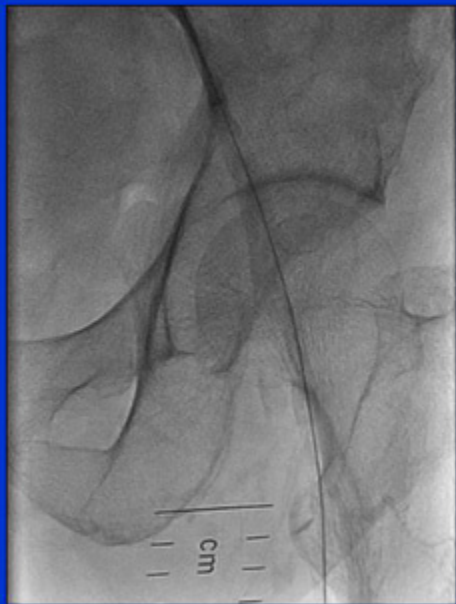
**L PTA: 0 cm/s**



**L PDA: 0 cm/s**

PTA







.035 " Terumo Wire 3.0/20 mm Fox balloon  
Subintimal dissection Method



4.0/60 mm Fox balloon at 10-14 atm





5.0/80 mm Fox balloon

CMUH

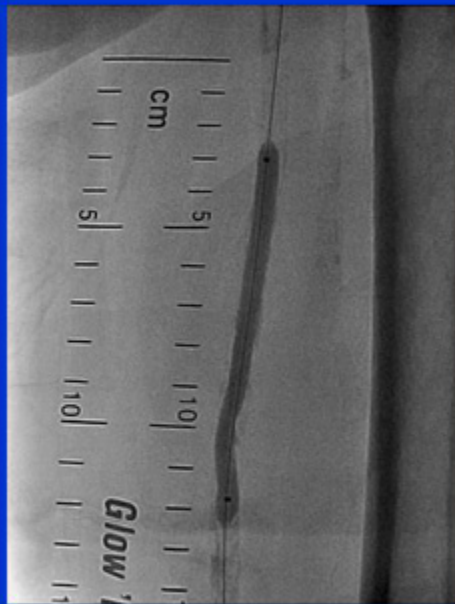




# 2<sup>nd</sup> PTA



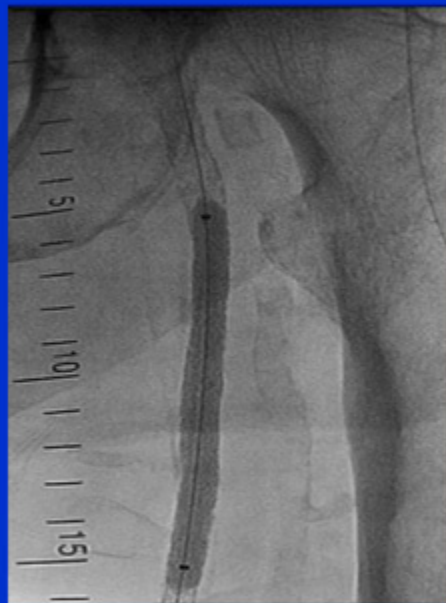
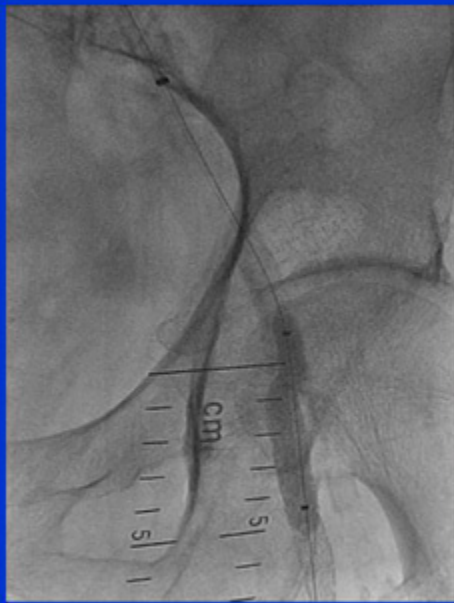




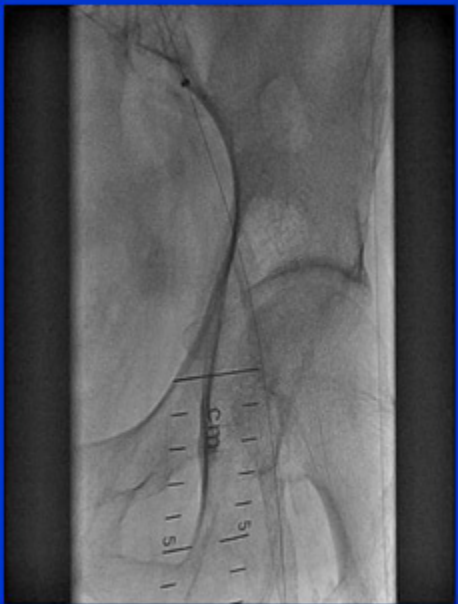
5.0/80 mm Fox balloon



7.0/120 mm Life stent



7.0/40 mm Fox balloon







.014" Miracle 6, .014" Persuader 9, .018" V18 wire

CMUH



# What's Next ....

ABI 0->0.39 after PTA

- 1) Try again...
- 2) Bypass lower LSFA to LPTA, but still refuse
- ✓ 3) Retrograde PTA via LPTA



# 3<sup>rd</sup> PTA





**6 Fr Cook Crossover Sheath  
6 Fr JR4 Catheter**



**4 Fr 90 cm Cook Shuttle Sheath**



.014 “ Conquest Pro



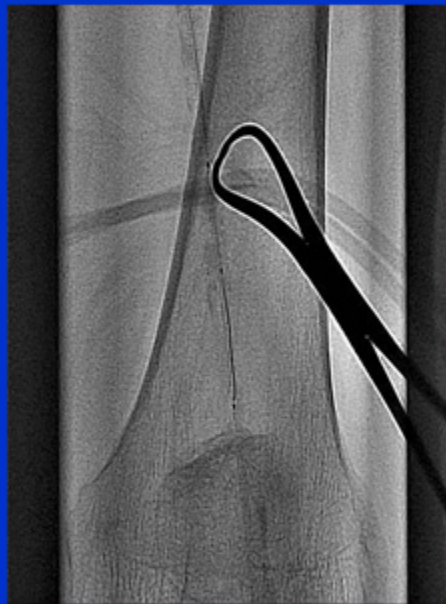
**21 Gauge Micropuncture Needle**



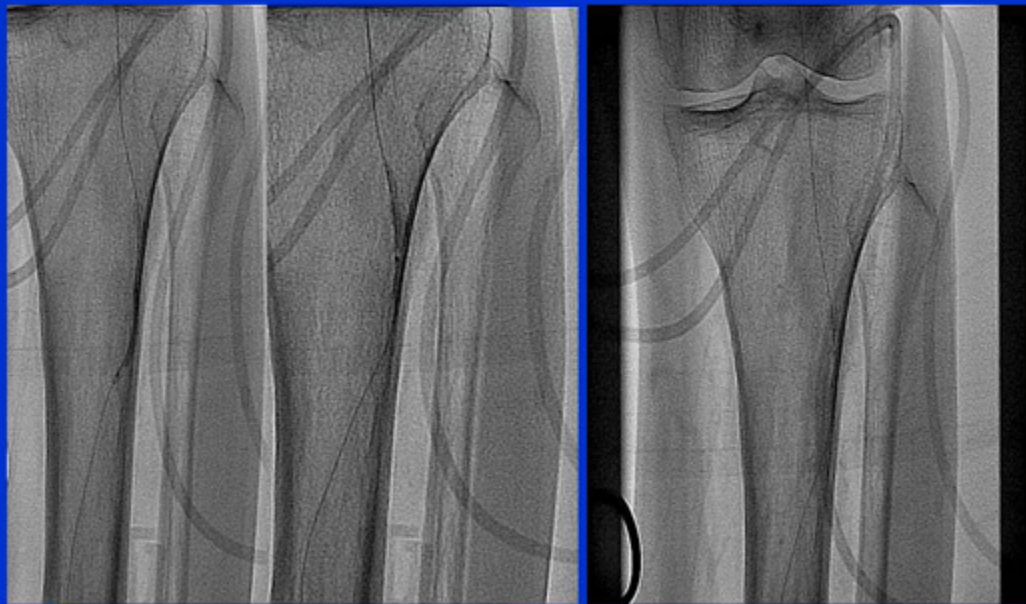
**.014 " PT2 300 cm wire**



.014 " Conquest Pro Wire



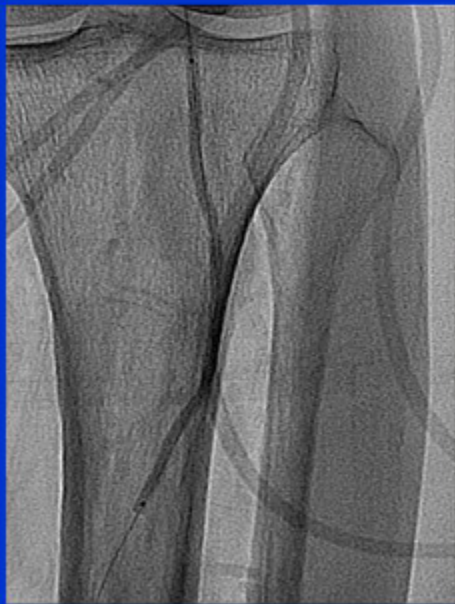




2.0/20 mm Sprinter OTW Balloon at 14 atm

CMUH





2.5/100 mm Fox-SV Balloon at 12 atm

CMUH





3.0/38 mm Resolute



4.0/30 mm Resolute

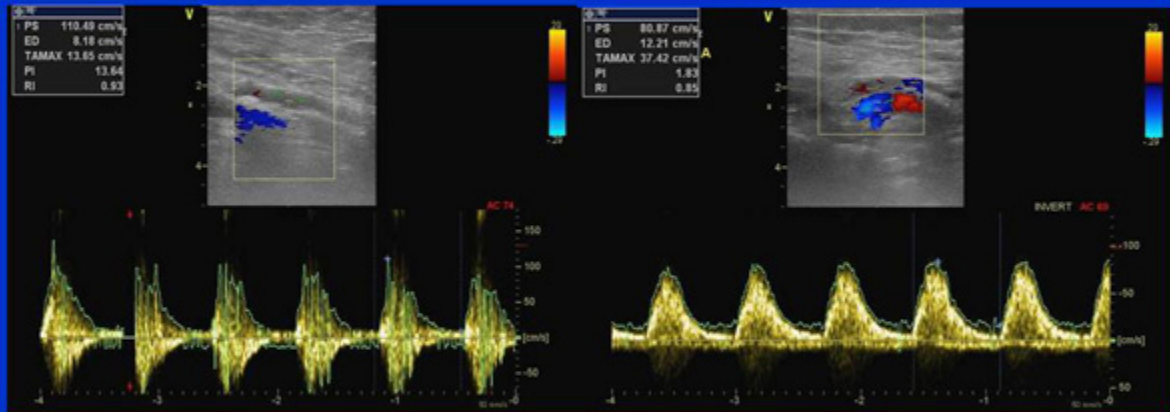
CMUH





ABI 0 -> 0.39 -> 0.72 after PTA

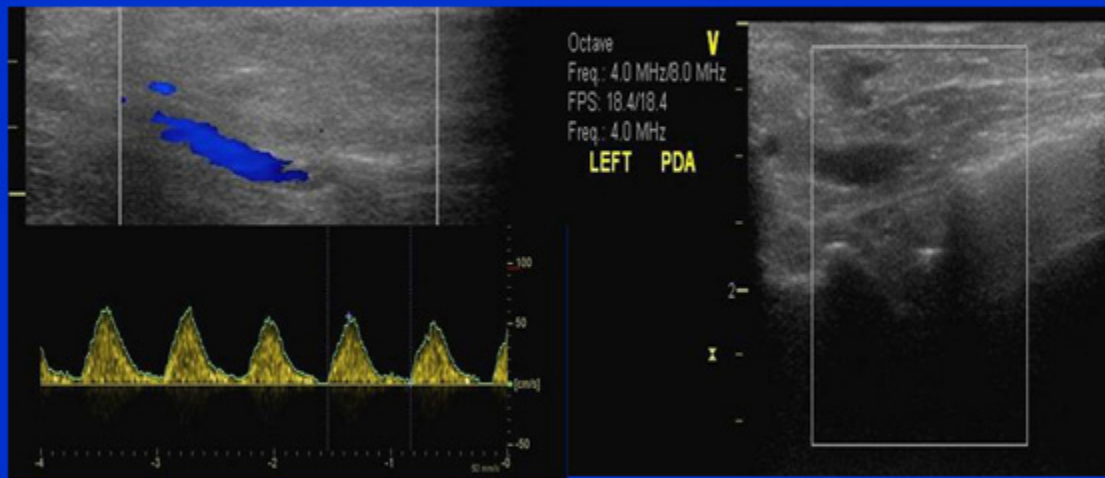
# Ultrasound



**LSFA: 110 cm/s**  
**No ISR**

**LPOP: 81 cm/s**

# Ultrasound



**L PTA: 56 cm/s**

**L PDA: 0 cm/s**



# Summary

- LSFA CTO
  - 1<sup>st</sup>/2<sup>nd</sup> PTA: subintimal dissection method
  - ABI 0 -> 0.39
- L pop a (P3 seg) and left infra-geniculate CTO
  - 3<sup>rd</sup> PTA: retrograde sheathless pedal approach
  - ABI 0 -> 0.39 -> 0.72
- Aspirin/plavix/cilostazol
- Wound healing improved, keep HBO therapy

